

DECEMBER 2014

Best Sellers

FICTION BEST SELLERS

GRAY MOUNTAIN

John Grisham

LEAVING TIME

Jodi Picoult

DEADLINE

John Sanford

DESERT GOD

Wilbur Smith

LILA

Marilynne Robinson

BURN

James Patterson

SHOPAHOLIC TO THE STARS

Sophie Kinsella

THE HURRICANE SISTERS

Dorothea Benton Frank

THE MATCHMAKER

Elin Hilderbrand

THE INVENTION OF WINGS

Sue Monk Kidd

NON-FICTION BEST SELLERS

KILLING PATTON

Bill O'Reilly and Martin Dugard

13 HOURS

Mitchell Zuckoff

WHAT IF

Randall Munroe

DIARY OF A MAD DIVA

Joan Rivers

We Will Be Closed

CHRISTMAS EVE

&

CHRISTMAS DAY

Bowerston Public Library

Library Board of Trustees:

President: William W. Titley

Vice-President: Susan Cook

Secretary: Kathy Bower

Les Berg

Kevin Willoughby

Dianne Cole

Logan Putnam

Library Hours

Monday 10 - 8

Tuesday 10 - 5

Wednesday 10 - 5

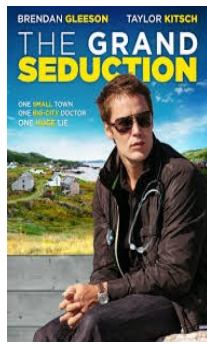
Thursday 10 - 8

Friday 10 - 2

Saturday 9 - 1

Sunday Closed

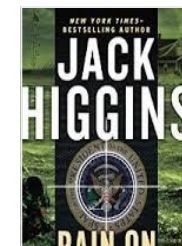
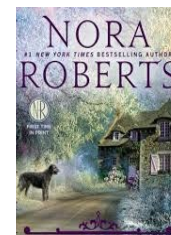
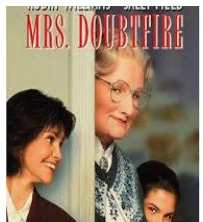
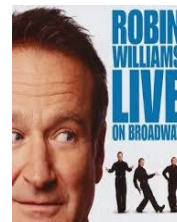
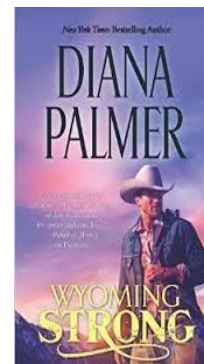
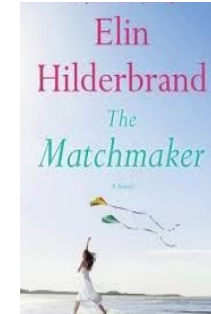
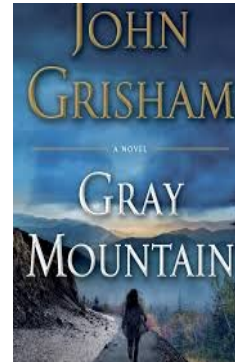
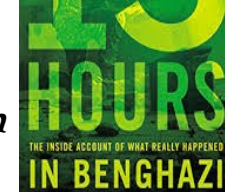




Place on Hold NOW!!



*Place these
New Books on
Hold*



Available for Reserve Now

Havanna Storm by Clive Cussler
The Patmos Deception by Davis Bunn
Christopher's Diary : Secrets of Foxworth by
V.C Andrews
Winter Street by Elin Hilderbrand
Full Measure by T. Jefferson Parker
Us by David Nicholls
Wyoming Strong by Diana Palmer
Host by Robin Cook
A.D 30 by Ted Dekker
Us by David Nicholls

STORY HOUR FIRST WEDNESDAY of the Month

10:30 - 11:15

Toddlers and preschoolers: Join us for a fun-filled morning of stories, activities, crafts. Children will learn important social interaction skills while they enjoy making new friends.



Bowerston Library Book Club's

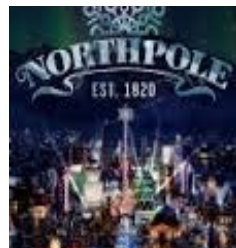
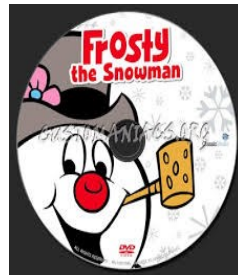
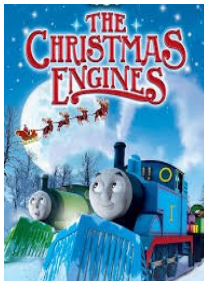
Bowerston Book Review
The book club meets
2nd Thursday of the month at
10:30a.m.



Placing Holds online: Hot to get the items you want
www.bowerstonlibrary.org

1. Click on "Card Catalog"
2. Now you can search for the item that you would like
3. You can search by:
TITLE BROWSE
AUTHOR BROWSE
SUBJECT BROWSE
4. When you find the item that you would like, click on the title
5. You should see a page with item information. There are two buttons on this page" Add to my list" and "Request any copy"
6. Click on "Request any copy"
7. On the back of your Library Card is your Borrower Barcode Number
8. Then enter your pin number

Christmas Movies Coming Soon



Christmas Traditions

Find information about customs for the Christmas season, including trees, Santa Claus, holly, mistletoe, and more

by David Johnson

Christmas Tree

The practice of tree worship has been found in many ancient cultures. Often, trees were brought indoors and decorated to ensure a good crop for the coming year. Trees have also been linked to divinity. Egyptians associated a palm tree with the god Baal-Tamar, while the Greeks and Romans believed that the mother of [Adonis](#) was changed into a [fir](#) tree. Adonis was one of her branches brought to life.

The modern Christmas tree was likely born in the 8th century, when St. Boniface was converting the Germanic tribes. The tribes worshipped [oak](#) trees, decorating them for the [winter solstice](#). St. Boniface cut down an enormous oak tree, that was central to the worship of a particular tribe, but a fir tree grew in its place. The evergreen was offered as a symbol of Christianity, which the newly converted Germans began decorating for Christmas.

Prince [Albert](#), who was [German](#), introduced the Christmas tree to [England](#) after his marriage to Queen [Victoria](#) in 1840. German immigrants to [Pennsylvania](#) brought Christmas trees to America.

Mistletoe

The [Druids](#) believed [mistletoe](#) fell from heaven and grew onto a tree that sprang from Earth. Mistletoe thus represented the joining of heaven and earth, and God's reconciliation with mankind. A kiss under mistletoe symbolized acceptance and reconciliation.

Santa Claus

Patron saint of children and sailors, [Saint Nicholas](#) was a 4th-century bishop from Asia Minor. He was famous for giving gifts to children. His feast day, December 6, became a children's holiday in [Holland](#), where he is known as Sint Nikolaas. English colonists in New York (previously the Dutch colony of [New Amsterdam](#)) called him "Santa Claus" because they couldn't pronounce the Dutch name. The English began celebrating the feast day on Christmas.

Kriss Kringle, another name for Santa Claus, developed in Germany around 1600. German Protestants recognized December 25, the birth of the Christ child, Christkindl, as the time to give gifts. "Christkindl" evolved into "Kriss Kringle." In the Netherlands and Germany, the Santa Claus figure often rode through the sky on a horse to deliver presents to children. He often wore a bishop's robes and was

One of the most popular Christmastime accoutrements, holly has sharp edges, symbolic of the crown of thorns worn by Jesus at his crucifixion. The red berries represent blood.

Yule Log

The word yule meant "infant" in the language of the Chaldeans, who lived in the Middle East. The Germanic tribes of Northern Europe, including the Anglo Saxons, celebrated "Yule-day" or "Child's Day."

The custom of the Yule log has been noted in France and Italy as far back as the 1200s. It later spread throughout Europe. On Christmas Eve an enormous log would be cut and placed in the hearth. The log would be sprinkled with salt, oil, and mulled wine, and prayers said to protect the house from the Devil and lightning.

In some regions, the daughters of the family lit the log with splinters of the previous year's log. In other regions, the lady of the house had the honor of lighting the log.

As iron stoves replaced giant hearths in the 1800s, Yule logs became decorative, often being used as Christmas centerpieces and decorated with evergreens and candles. Cooks began creating pastry Yule logs, rolled cakes covered in chocolate or coffee and decorated with sugared holly and roses.

Candy Canes

Some scholars believe a confectioner developed candy canes to represent Jesus. The shape of the "J" was for Jesus, or the shepherd's staff. The white color symbolized purity, while the red stripes indicated blood. Peppermint is similar to hyssop, the Middle Eastern mint mentioned in the Bible.

Christmas Cards

The custom of sending Christmas cards started in Victorian England. Earlier, some adults had written Christmas letters. But letters took time to write; and people wanting to share season's greetings with many others had a daunting task.

In 1843, British businessman Sir Henry Cole asked artist John Calcott Horsley to print some Christmas cards. One thousand cards were printed in black and white and then colored by hand. The cards, which depicted a happy family raising a toast to the recipient, were criticized for promoting drunkenness. In 1851 Richard Pease, a variety store owner, commissioned the first printed Christmas card in the U.S.

London printers Charles Goodall & Sons became the first to mass-produce Christmas cards. In 1862 they created cards saying "A Merry Christmas." Later, they designed cards with various designs, including robins, holly, mangers, snowmen, and even Little Red Riding Hood.

Holly

One of the most popular Christmastime accoutrements, holly has sharp edges, symbolic of the crown of thorns worn by Jesus at his crucifixion. The red berries represent blood.

Holiday Tunes

- in a Manger
- of the Bells
- nick the Donkey
- / the Snowman
- Jolly Christmas
- Bell Rock
- Bells
- Snow
- Drummer Boy
- St Nick
- y Night
- ph
- Baby
- Nigh
- Bells
- hristmas Song
- irst Noel
- er Wonderland

en Scratch NY

X L O K L D J W S Q W U N U Q J E S C B
J I N G L E B B L R O C K M I S D H Y
H T N Z C J B O A S L C Y J E D N N I O O C
U T H G I N T E N S L I S T L B G L M I Q
K L I T T L E S T N I C K S K L V I R M
F E J R H R N P B S I X A Y Y E E N O U
X D G Y E I X I U N R N O J T B R I F R
Z R T B C G W X U I T I O A I E B C T V
N U J C H D N H A M L F U P L E K H B
F M R L R I F I A B A L K G K L L T E X
I M U E I L T A M Y I T M Z H S L H B B
C E D Y S A B V C A X Z K V O T S E H
F R O S T Y T H E S N O W M A N D L J
A B L D M D R R T H G I N Y L O H O L C
M O P E A I Q I V C E A Y C O I N S F
A Y H Z S O X T W C X I S A Q U C K K Y
D A B T S O K O J F U V N E K W P G E T U
R A M W O N S T I T E L V O Q A F Y B M
G A K D N A L R E D N O W R E T N I W I
S W C Z G N A L I L U